

Features

- Modern Wall-Mounted Bathroom Faucet with 1-Handle
- Single handle lever controls water flow and temperature
- Polished Chrome Finish
- Made of Lead-Free Solid Brass
- Requires 2-Hole Installation
- Flow Rate: 1.5 GPM
- Spout Reach: 7.5"


Flow T1.16B



Finishes



Polished Chrome

<b>Collection</b> Flow	<b>Model</b>   Flow T1.16B	Dimensions Metric <i>1 inch = 2.54 cm</i> <i>1 inch = 25.4 mm</i>	 1051 Lea Drive - Collegeville, PA 19426 Tel. 215 513 9400 - Fax 610 831 0215 <a href="http://www.ws bathcollections.com">www.ws bathcollections.com</a> - <a href="mailto:info@ws bathcollectins.com">info@ws bathcollectins.com</a>
---------------------------	-------------------------------	-------------------------------------------------------------------------	-------------------------------------------------------------------------------------------------------------------------------------------------------------------------------------------------------------------------------------------------------------------------------------------------------------------------------------

Collection  
Flow

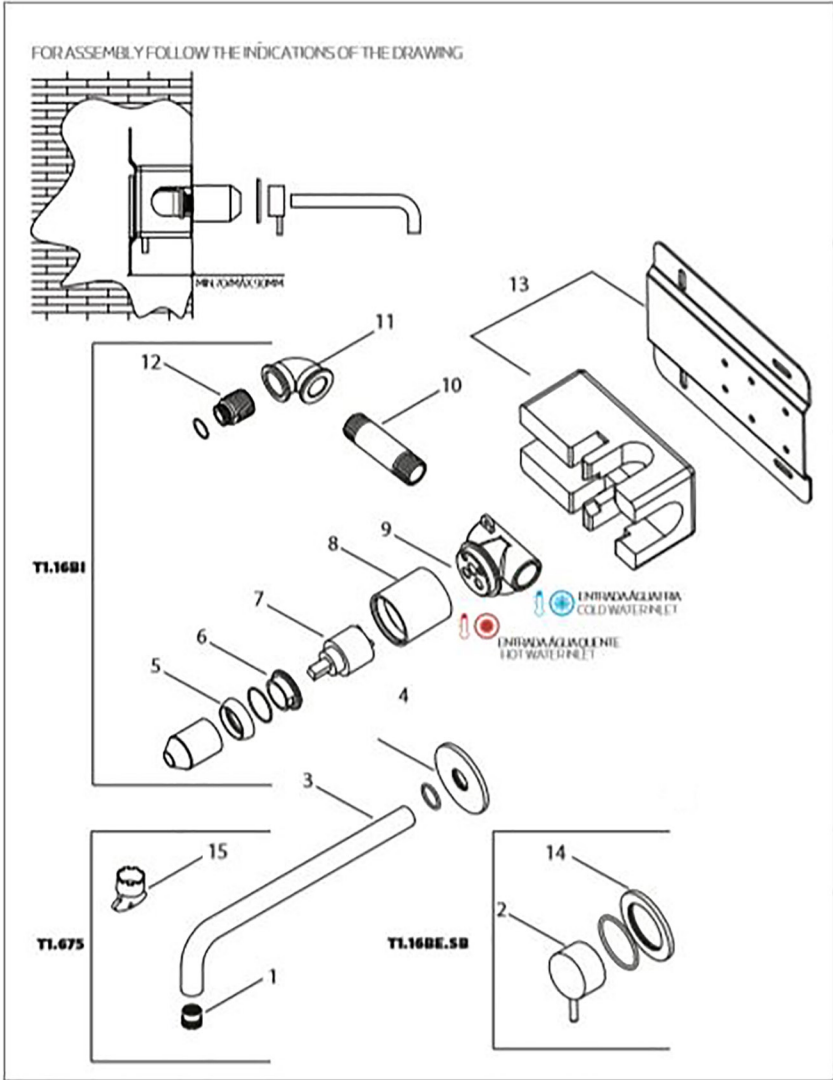
## Dimensions Metric

WS<sup>®</sup> BATH COLLECTIONS

1051 Lea Drive - Collegeville, PA 19426  
Tel. 215 513 9400 - Fax 610 831 0215  
[www.ws bathcollections.com](http://www.ws bathcollections.com) - [info@ws bathcollectins.com](mailto:info@ws bathcollectins.com)

# Product Specs Sheets

## ASSEMBLY INSTRUCTIONS



### TECHNICAL DATA

Nº	DESCRIPTION
01	AERATOR
02	HANDLE
03	SPOUT
04	PLATE SPOUT
05	CARTRIDGES CONCEALER
06	LOCKNUT
07	CARTRIDGE
08	HOOD
09	FORGED BASE
10	CONNECTION TUBE
11	CONNECTION ELBOW
12	CANNON
13	EASY BOX
14	HANDLE PLATE
15	AERATOR KEYS

### INSTALLATION RECOMENDATIONS

Before installing a tap, it is good to rinse the supply pipes to remove all residues. We also recommend installing the taps with a filter. The installation of the tap must be done with the surface clean and dry. to perform the water pressure test, the taps must be open.

### CLEANING AND MAINTENANCE

Cleaning must be done with liquid soap and water. Do not use liquid detergents containing abrasive or acidic substances, abrasive sponges or disinfectants. Incorrect cleaning may permanently ruin the surface of taps.

On color finishings, do not use products containing alcohol, acetone and other solvents.

Collection  
Flow

Model |  
Flow T1.16B

Dimensions Metric  
1 inch = 2.54 cm  
1 inch = 25.4 mm

**WS**®  
BATH  
COLLECTIONS

1051 Lea Drive - Collegeville, PA 19426  
Tel. 215 513 9400 - Fax 610 831 0215  
[www.ws bathcollections.com](http://www.ws bathcollections.com) - [info@ws bathcollectins.com](mailto:info@ws bathcollectins.com)